

Cable glands & accessories

ALT Tauras™ Cable Glands

Tauras™ CW ALT Range



Application: Brass indoor and outdoor gland suitable for all types of steel wire armoured cable (SWA), providing an environmental seal on the outer cable sheath. The gland also provides mechanical cable retention and electrical continuity via armour wire termination.

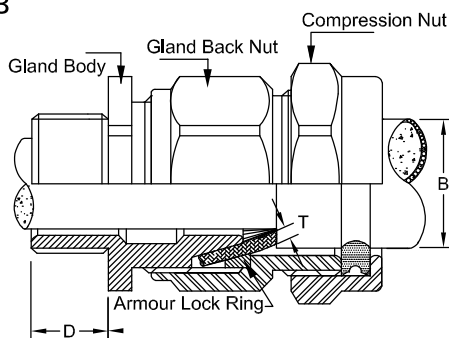
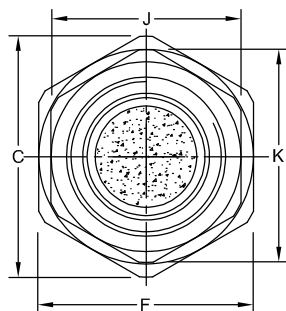
Continuous operating temp: PVC: -20°C to +130°C
LSF: -20°C to +130°C

Ingress protection: IP66

Standard: BS EN 62444:2013



Complete with award-winning EarthingNut™
INNOVATIVE POWER
PRODUCT OF THE YEAR



Part No.	Pack Quantity	Entry Thread		Cable Acceptance Details		Hexagonal Details			
		Diameter N	Length D	Diameter B min max	Armour wire size T	Body & Back Nut		Compression Nut	
						A/F J	A/C K	A/F F	A/C C
TCW2016* PACK ALT-EN	2	16 x 1.5	10	8.6 - 13.5	0.90	20.0	23.0	20.0	23.0
TCW20S* PACK ALT-EN	2	20 x 1.5	10	11.8 - 15.8	0.90/1.25	22.0	24.4	22.0	24.4
TCW20* PACK ALT-EN	2	20 x 1.5	10	13.8 - 19.5	0.90/1.25	25.0	27.7	25.0	27.7
TCW25* PACK ALT-EN	2	25 x 1.5	10	19.8 - 27.0	1.25/1.60	33.0	36.6	33.0	36.6
TCW32* PACK ALT-EN	2	32 x 1.5	10	26.4 - 33.5	1.60/2.00	40.0	45.5	40.0	45.5
TCW40* PPACK ALT-EN	1	40 x 1.5	15	32.4 - 40.1	1.60/2.00	48.0	53.3	48.0	53.3
TCW50S* PACK ALT-EN	1	50 x 1.5	15	37.8 - 48.0	2.00/2.50	58.0	65.0	58.0	65.0
TCW50* PACK ALT-EN	1	50 x 1.5	15	44.0 - 52.6	2.00/2.50	62.5	66.6	62.5	66.6
TCW63S* PACK ALT-EN	1	63 x 1.5	15	50.5 - 60.5	2.50	70.0	77.0	70.0	77.0
TCW63* PACK ALT-EN	1	63 x 1.5	15	56.2 - 65.5	2.50	76.0	83.3	76.0	83.3
TCW75S* PACK ALT-EN	1	75 x 1.5	15	62.0 - 71.6	2.50	85.0	94.4	85.0	94.4
TCW75* PACK ALT-EN	1	75 x 1.5	15	67.5 - 78.5	2.50/3.15	90.5	99.0	90.5	99.0

All dimensions are in mm.

Pack content: Gland(s), shroud(s), EarthingNut™(s) and crimp terminations.
Packs are also available with Low-smoke LSF shroud.

*Add LSF to the Part No. for Low Smoke & Fume version, i.e. **TCW20SLSF PACK ALT-EN**

To see a video showing a demonstration, scan this QR code

